

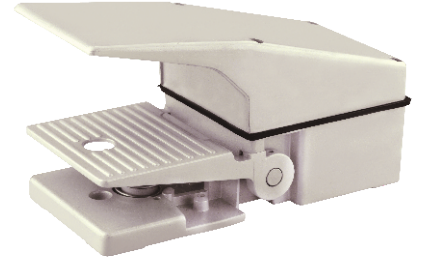
Manufactures Low Voltage Switchgears  
 All Types of Micro Switches, Limit Switches & Foot Switches

**BFS-10 SERIES**

**Technical Specification**

Rating : 10A / 500V AC  
 Body Material : Aluminium pressure die casting  
 Contact Material : Silver Cadmium Oxide  
 Terminal : Brass

Order Code	Description	Contact Form	Rating
BFS-10/X	Heavy Duty Foot Switch Without Wire	SPDT-DB	10A / 500 V AC
BFS-10/X/L	Heavy Duty Foot Switch With Latch	SPDT-DB	10A / 500 V AC
BFS-10/X2	Heavy Duty Foot Switch With 3 Position	2 SPDT-DB	10A / 500 V AC
BFS-10/XX	Heavy Duty Foot Switch Without Wire	DPDT-DB	10A / 500 V AC
BFS-10/XX/L	Heavy Duty Foot Switch With Latch	DPDT-DB	10A / 500 V AC
BFS-10/XX2	Heavy Duty Foot Switch With 3 Position	2 DPDT-DB	10A / 500 V AC
BFS-10/XX/P5K	Foot Switch, With 5K Ohms POT	DPDT-DB	10A / 500 V AC
BFS-10/XX/P10K	Foot Switch, With 10K Ohms POT	DPDT-DB	10A / 500 V AC

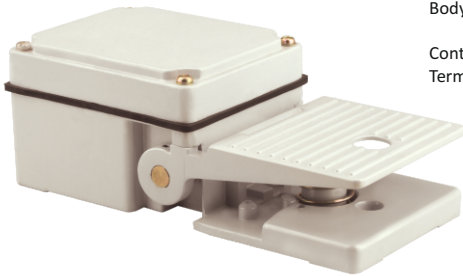


**BFS-11 SERIES**

**Technical Specification**

Rating : 10A / 500V AC  
 Body Material : Aluminium pressure die casting  
 Contact Material : Silver Cadmium Oxide  
 Terminal : Brass

Order Code	Description	Contact Form	Rating
BFS-11/X	Heavy Duty Foot Switch Without Wire	SPDT-DB	10A / 500 V AC
BFS-11/X/L	Heavy Duty Foot Switch With Latch	SPDT-DB	10A / 500 V AC
BFS-11/X2	Heavy Duty Foot Switch With 3 Position	2 SPDT-DB	10A / 500 V AC
BFS-11/XX	Heavy Duty Foot Switch Without Wire	DPDT-DB	10A / 500 V AC
BFS-11/XX/L	Heavy Duty Foot Switch With Latch	DPDT-DB	10A / 500 V AC
BFS-11/XX2	Heavy Duty Foot Switch With 3 Position	2 DPDT-DB	10A / 500 V AC



**BFS-12 SERIES**

**Technical Specification**

Rating : 10A / 500V AC  
 Body Material : Aluminium pressure die casting  
 Contact Material : Silver Cadmium Oxide  
 Terminal : Brass

Order Code	Description	Contact Form	Rating
BFS-12/X	Heavy Duty Foot Switch Without Wire	SPDT-DB	10A / 500 V AC
BFS-12/X/L	Heavy Duty Foot Switch With Latch	SPDT-DB	10A / 500 V AC
BFS-12/X2	Heavy Duty Foot Switch With 3 Position	2 SPDT-DB	10A / 500 V AC
BFS-12/XX	Heavy Duty Foot Switch Without Wire	DPDT-DB	10A / 500 V AC
BFS-12/XX/L	Heavy Duty Foot Switch With Latch	DPDT-DB	10A / 500 V AC
BFS-12/XX2	Heavy Duty Foot Switch With 3 Position	2 DPDT-DB	10A / 500 V AC
BFS-12/XX/P5K	Foot Switch, With 5K Ohms POT	DPDT-DB	10A / 500 V AC
BFS-12/XX/P10K	Foot Switch, With 10K Ohms POT	DPDT-DB	10A / 500 V AC



**BFS-13 SERIES**

**Technical Specification**

Rating : 10A / 500V AC  
 Body Material : Aluminium pressure die casting  
 Contact Material : Silver Cadmium Oxide  
 Terminal : Brass

Order Code	Description	Contact Form	Rating
BFS-13/A/C2.2	With 2 Core 2 Meter Wire	SPST-NO	10A / 500 V AC
BFS-13/Z/C2.2	Push To ON, Push To OFF (POPO)	SPST POPO	10A / 500 V AC

